



Measurement & Inspection Surveying



- **Less Risk:** boots off ballast
- **Less Cost:** reduced possessions/line blocks
- **Less Time:** shorter programmes
- **More Speed:** rapid mobilisation
- **More Value:** point cloud, photography, topo survey
- **High Accuracy:** sub-5mm
- **Accepted:** Network Rail endorsed
- **Accessibility:** Unique client portal



Permission no
2703



Major works include

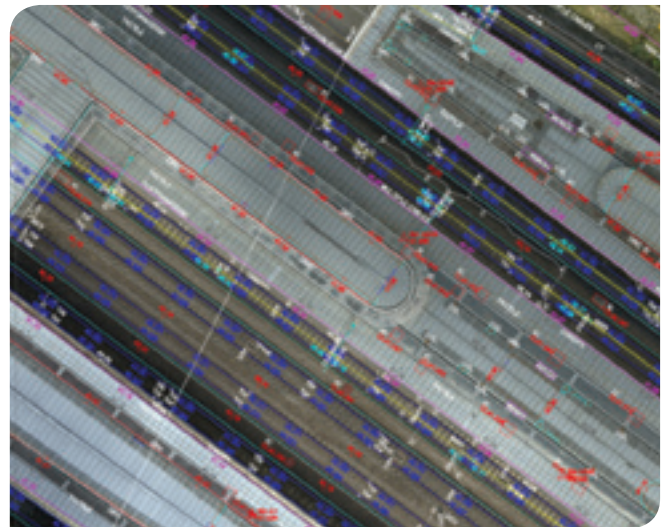
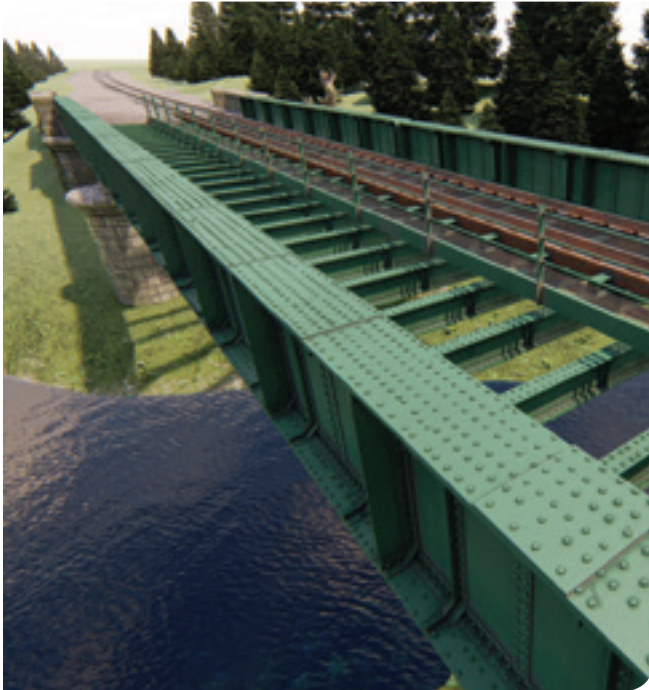
- Paddington Approach
- Battersea Pier
- Guildford Station
- Clapham Junction
- Cardiff East & West S&C
- Bristol Temple Meads



Case Study

Don Viaduct

- Part of £170m Aberdeen-Inverness upgrade
- High-accuracy Vogel R3D drone survey
- Information-rich 3D BIM model for design
- Bridge & surrounds captured to sub-5mm
- No line closures or workers on track



About Plowman Craven

Plowman Craven provides integrated measurement and consultancy services to the property and infrastructure markets, pioneering the use of technical innovation to deliver proven expertise and trusted results throughout the project lifecycle.

Head Office

Plowman Craven House
Lea Business Park, Lower Luton Road
Harpenden, Hertfordshire AL5 5EQ
Tel: +44 (0)1582 765566

London

Tel: +44 (0)20 7490 7700

Birmingham

Tel: +44 (0)121 262 4218