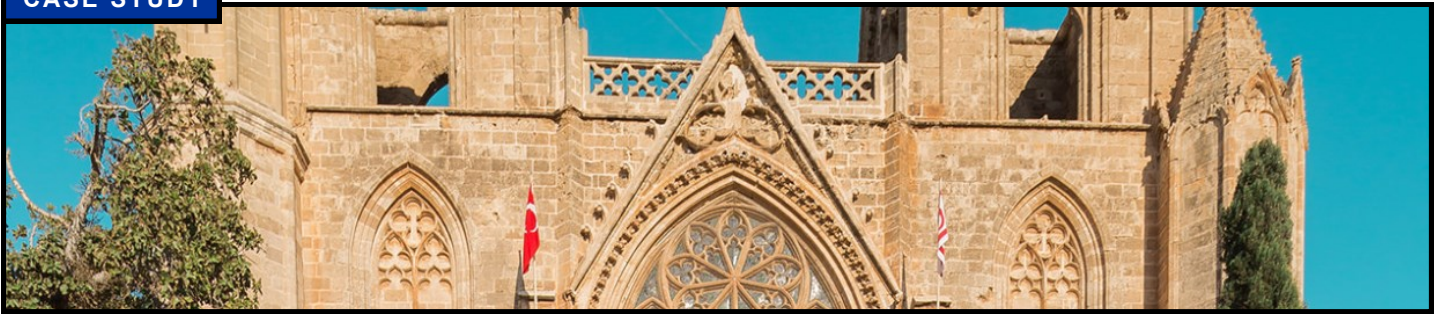


**CASE STUDY**



## Sinan Pasha Mosque, Famagusta

**Client:** GB Geotechnics

When Sinan Pasha Mosque (the Church of Saints Peter and Paul) in Famagusta, North Cyprus was undergoing renovation, a survey was required to assist in the restoration programme.

We approached the project holistically by providing both a heritage and structural solution to the client's requirements. Using state-of-the-art laser scanning technology to collect the raw three dimensional data in a point cloud format, a full 3D surface model was produced which was then photographically draped.

The subsequent model constructed was used to produce an interactive walk-through to assist presentation and understanding. It was specifically useful in assisting with the design of structural reinforcement to guard the building, originally constructed in 1360, against future damage from earthquakes.

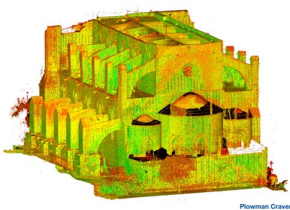
The survey data and models produced by Plowman Craven provided the platform for decision making, accurate design and alterations.

**Related Services:**

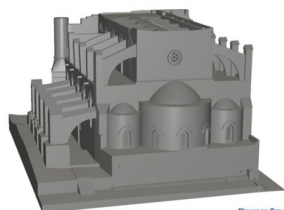
Measured Building Surveys; Surveys for Planning, Rights of Light and Visualisation

**Related Market:**

Heritage, Arts and Leisure



Plowman Craven



Plowman Craven



Plowman Craven

**About Plowman Craven**

Plowman Craven provides integrated measurement and consultancy services to the property and infrastructure markets, pioneering the use of technical innovation to deliver proven expertise and trusted results throughout the project lifecycle.

**Head Office**

Plowman Craven House  
2 Lea Business Park, Lower Luton Road  
Harpenden, Herts. AL5 5EQ  
Tel: +44 (0)1582 765566

**London Office**

115 Southwark Bridge Road  
London  
SE1 0AX  
Tel: +44 (0)20 7490 7700

Email: [post@plowmancraven.co.uk](mailto:post@plowmancraven.co.uk)