

CASE STUDY



Fort Bovisand, Devon

Client: Househam Henderson Architects

Fort Bovisand is a Victorian fort that was built to defend the entrance of Plymouth Sound in the nineteenth century.

In 2010, Plowman Craven was instructed by Househam Henderson Architects to undertake a dimensional survey of the fort.

The survey would be used as a very first step in the regeneration project, just before the creation of Fort Bovisand Trust and subsequent funding operations.

Plowman Craven applied innovative techniques to undertake the data capture of the fort and provide drawings and record photographs to the Client. The scale of the site, the timeframe, and health and safety issues generated a challenging environment for our teams.

Heavy use of laser scanning equipment, high resolution imaging system and advanced surveying techniques involving motorised total station and real time kinematic GPS observations enabled Plowman Craven to capture all the necessary information safely, and in a very short time.

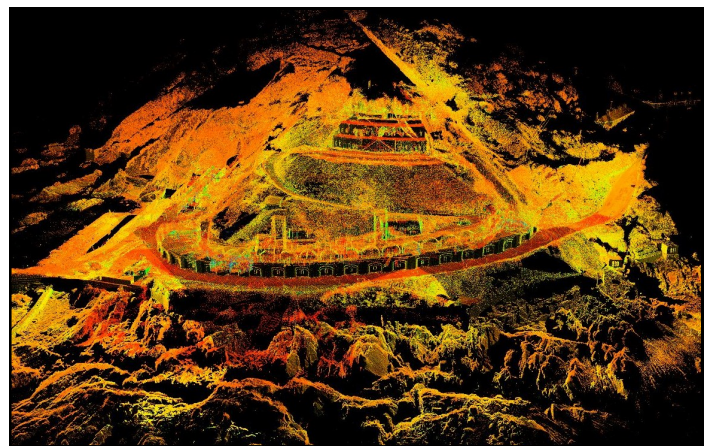
The remote location commanded a very thorough and complete data collection to eliminate the need for return visits. The experience gathered previously on vast point cloud data collection projects was essential for a successful survey campaign.

Related Services:

[Measured Building Surveys;](#)

Related Markets:

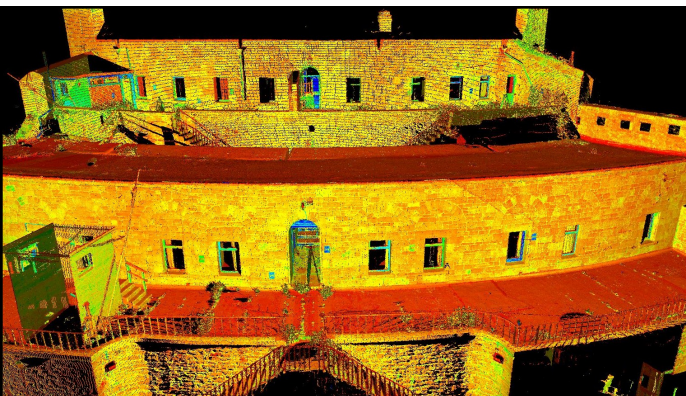
[Heritage, Arts & Leisure](#)



Extract of the external point cloud information



Complex building shapes efficiently captured using laser scanners



High resolution scan data of the upper fort

About Plowman Craven

Plowman Craven provides integrated measurement and consultancy services to the property and infrastructure markets, pioneering the use of technical innovation to deliver proven expertise and trusted results throughout the project lifecycle.

Head Office

Plowman Craven House
2 Lea Business Park, Lower Luton Road
Harpenden, Herts. AL5 5EQ
Tel: +44 (0)1582 765566

London Office

115 Southwark Bridge Road
London
SE1 0AX
Tel: +44 (0)20 7490 7700

Email: post@plowmancraven.co.uk