

# Geospatial support for your design and installation of automated technology

**Plowman Craven's** high precision survey solutions are critical in supporting the efficient integration and installation of cutting-edge **robotics** within warehouse distribution and fulfilment facilities.

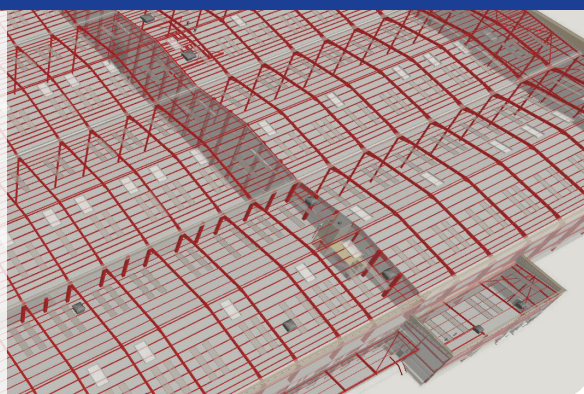
Our specialist and dedicated teams utilise the latest laser scanning technology, bespoke statistical analysis software and modelling (BIM) capabilities, working with clients across the world to provide high accuracy reports and engineering services that help deliver cost savings and efficiencies through the whole project lifecycle.

## How can we assist you in designing and visualising the best solution for your client?

We provide a full understanding of the current facility. Having clear knowledge of the challenges ahead will enable you to optimise your design solution.

We deliver accurate 2D or 3D data aligned with bespoke deliverables that not only ensure you are working with up-to-date information, but enable you to have confidence in your designs.

- |                                |                            |
|--------------------------------|----------------------------|
| ✓ BIM models                   | ✓ 3D point cloud           |
| ✓ 360 photography              | ✓ Floor plans              |
| ✓ Visualisations & simulations | ✓ Multi-stakeholder access |

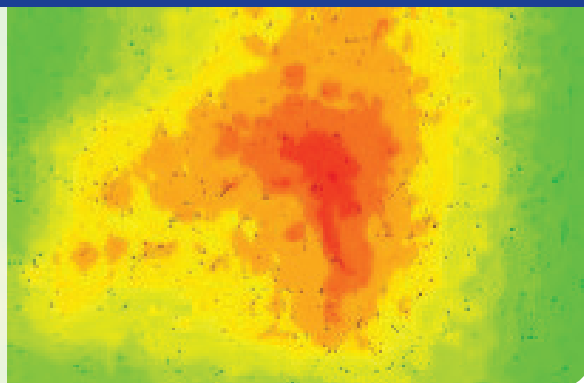


## Optimising your robotic operation. Is the floor flat?

A new approach to fully understanding your operational area is through the utilisation of high precision 3D laser scanning technology, robust workflows and bespoke data analytics software.

This generates an accurate map of the overall floor which can provide you with performance intelligence needed to optimise your robotic solution. This, aligned with our reporting package, indicates areas of remediation, provides grinding plans and floor property analysis.

- |                        |                            |
|------------------------|----------------------------|
| ✓ Floor laser scanning | ✓ Surface characteristics  |
| ✓ Surface profiling    | ✓ Data analytics reporting |



## Can we support your solution and engineering teams?

Our expert surveyors have successfully worked on over 100 million square feet of robotic floors across the UK, Europe and Australia. We have delivered construction verification surveys, set out fiducials and undertaken MHE equipment position surveys in facilities ranging from large fulfilment and sortation centres through to small distribution warehouses. Our resource capacity and capability provides the key geospatial support for any solutions team.

- |                             |                             |
|-----------------------------|-----------------------------|
| ✓ Construction verification | ✓ MHE & fencing setting out |
| ✓ Fiducial setting out      |                             |



If you'd like to know more about our robotics geospatial services please get in touch:



Peter Folwell, Director  
**Tel: +44 (0)1582 765566 +44 (0)7697 501074**  
**[pfolwell@plowmancraven.co.uk](mailto:pfolwell@plowmancraven.co.uk)**