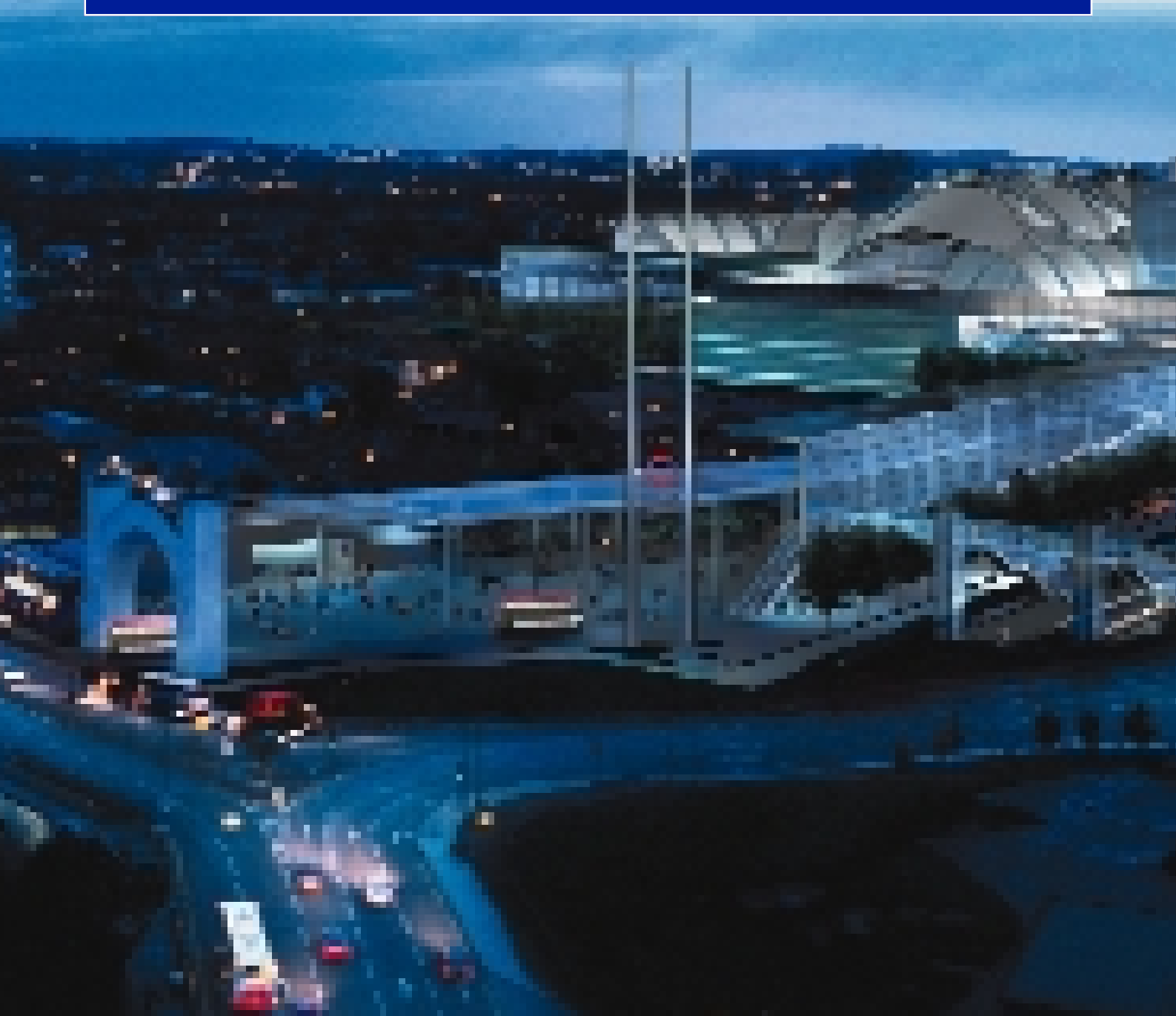


Topographical Services

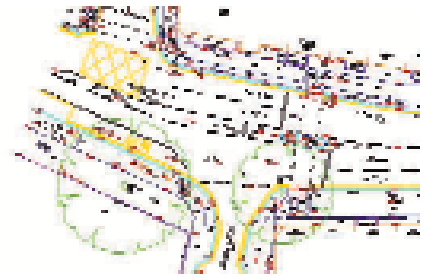
...complete
measurement solutions
for *total* peace of mind...



Plowman Craven

SITE SERVICES

2D and 3D Topographical Services



Whether for general planning or a developer with a multi-million business park in mind, accurately assessing the lay of the land is the first step in the building of success.

Using time-proven traditional 2D and state-of-the-art 3D techniques, Plowman Craven's topographical surveys are an *accurate aide memoire* to peace of mind.

The company's services include green field and brown field topographical surveys, the establishment of horizontal and vertical survey control station networks, elevations and cross-sections, digital terrain modelling and surveys for planning applications and right of light considerations.

Town planners, local authorities, designers, architects and developers alike are assured of **complete measurement solutions** for **total peace of mind** from a company with over 40 years of solid experience backed by the most sophisticated survey technology currently available.

Based in Harpenden, UK, and with a highly skilled staff of over 150, Plowman Craven has a firmly established policy of heavy ongoing investment in both technology and staff.

It has pioneered the use of GPS in topographical surveying and was also the first European surveying company to

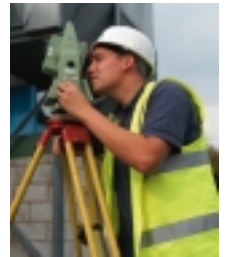
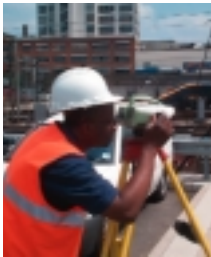
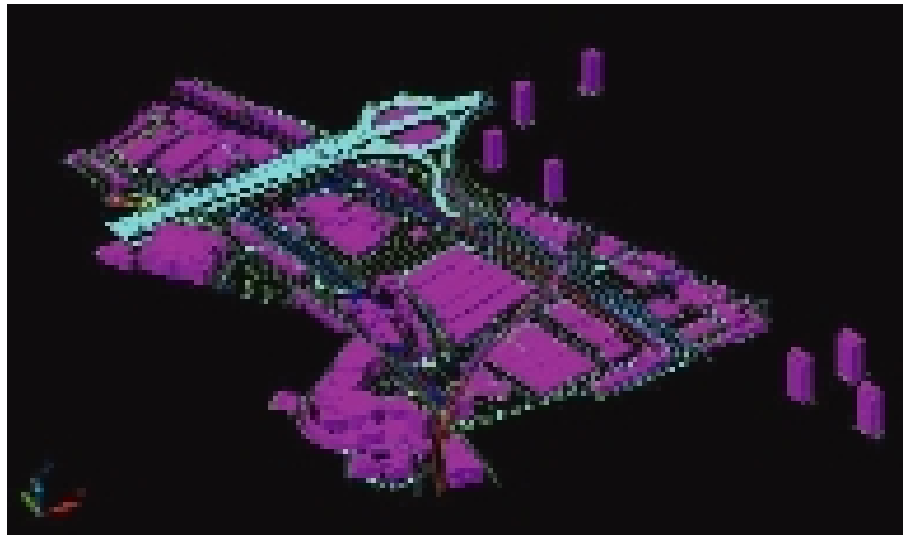
purchase a terrestrial laser scanner, a 21st Century tool for preparing 3D surveys of structures and hard surfaces.

The company has been actively recruiting staff and has introduced its own on-site training facility to ensure that everyone within the company is kept up to date with the latest technological developments.

"If we measure it, you can better manage it," says Russell Haythorpe Team Manager for Site Services.

Plowman Craven have a whole team

of dedicated Project Managers, who run projects from inception to final completion. The requests from clients for 3D surveying data is increasing at a rapid rate therefore we are **investing heavily in new technology and staff training.** We provide a range of 'state of the art' services including 3D Wireframe, Solid, Photo, Mass and Textured/Rendered Models. These models are essential modern tools and can be used for presentation and planning purposes, plus flythroughs and animations.



- Area Referencing
- Legal Services
- Asset Management
- Facilities Management
- Engineering Surveys
- Topographical Surveys
- View Verification
- GPS Consultancy
- Measured Building Surveys
- Forensic Geomatics
- Heritage Recording
- Rights of Light Surveys
- Laser Scanning
- Photogrammetric Measurement
- 3D Modelling
- Photography



141 Lower Luton Road, Harpenden
Hertfordshire AL5 5EQ England

Telephone (01582) 765566

Fax (01582) 765370

email post@plowmancraven.co.uk

www.plowmancraven.co.uk

London Office

Telephone 020 7490 7700 Fax 020 7490 7701



Plowman Craven