

Terrorism

...*complete*
measurement solutions
for *total* peace of mind...



Plowman Craven

Terrorism

Dealing with the triple threats of terrorism, vandalism and theft costs Britain's economy billions of pounds, plus immeasurable aggravation – and things keep getting worse.

Businesses have a duty of care to their clients, their staff and, not least, their shareholders and other investors.

Forewarned is forearmed. To get the measure of the potential for terrorism attack, vandalism, burglary or other physical assault on your property it is key to carry out a full risk assessment. This can only be achieved if you have to hand totally accurate information.

With more than 40 years experience as leading measurement surveyors and a constant programme of investment in the latest, most sophisticated equipment and advanced training for highly skilled people to use it, Plowman Craven can generate a flow of basic information, plans and measured data – both in 2D and 3D – to comprehensively illustrate the layout and function of a premises and aid the process risk assessment and measures to counter the problems.

Providing **complete measured solutions** for **total peace of mind**, a Plowman Craven survey offers a powerful weapon in the battle against terrorism.

State-of-the-art GPS is an integral component in the company's armoury, enabling surveys to the **highest levels of accuracy.**

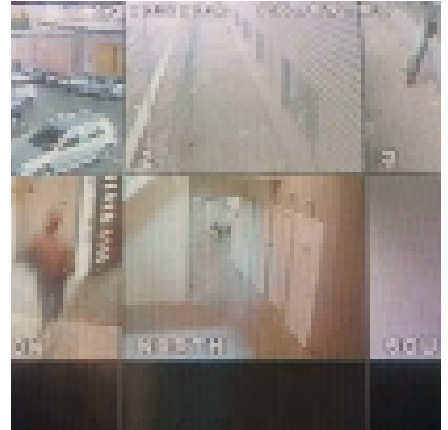
Using the Leica SmartNet system and other state of the art technology, this market-leading surveying organisation can undertake real-time data capture that provides instant co-ordinates accurately.

Effective analysis of occupation can be made even more effectively through the use of **sophisticated 3D visualisation.** Using viewpoint perspective technology, this advance has, for example, made it possible to assess the optimum location points for security desks and furniture and the most effective placing of CCTV cameras relative to the location of neighbouring buildings, outside planting, surrounding lawns or gardens and the streetscape.

The information gathered maps clearly all points of access and egress, the landscaping, boundaries, service roads, buildings and other structures and their relationship to the surrounding environment, enabling appropriate division of access between public and staff and between pedestrian and vehicular traffic.

By employing the data gathered in this format, it is also possible to identify the best positioning of hardened structures suitable for staff refuge in the event of an emergency.

Using this data, considered **risk-management advice** can be given by security specialists who will advise on the design and choice of appropriate



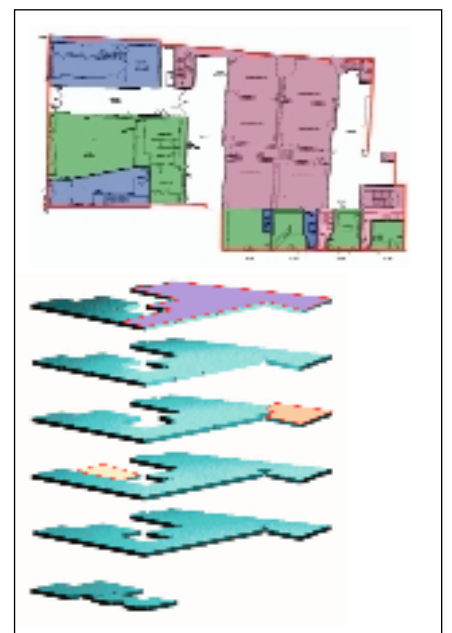
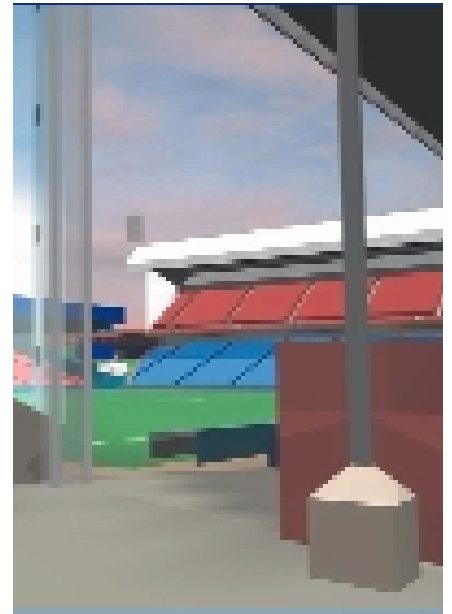
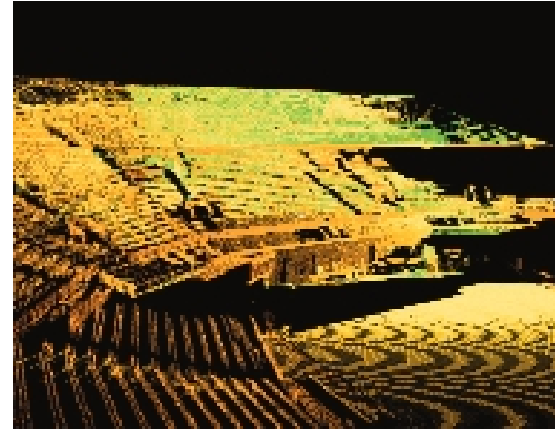
materials and equipment. Their primary concern will be the identification and, where possible, reduction, of the more hazardous types of construction materials. For instance, glass is seen as the most dangerous materials to individuals when subject to blast forces.

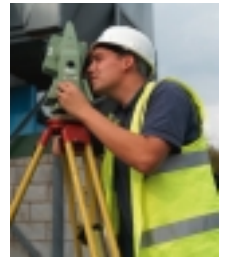
A secondary but important concern is addressing the appropriate division of access between public and staff and between pedestrian and vehicular traffic.

From this work will come **expert recommendations** as to the appropriate specifications for barriers, access control, materials, lighting and landscaping.

It is widely accepted that, given the background level of risk, both to a business and its staff, companies are under an obligation to demonstrate that they have fully assessed the risks involved and that, where appropriate, they are taking positive steps to mitigate the effects of an unpreventable attack. Such measures can only be undertaken effectively when armed with the data provided by a **comprehensive survey**.

Prevention truly is better than cure. **Accurate measurement** enables **maximum protection**. The Plowman Craven promise is complete measured solutions for total peace of mind.





Area Referencing
Legal Services
Asset Management
Facilities Management
Engineering Surveys
Topographical Surveys
View Verification
GPS Consultancy
Measured Building Surveys
Forensic Geomatics
Heritage Recording
Rights of Light Surveys
Laser Scanning
Photogrammetric Measurement
3D Modelling
Photography



141 Lower Luton Road, Harpenden
Hertfordshire AL5 5EQ England

Telephone (01582) 765566

Fax (01582) 765370

email post@plowmancraven.co.uk

www.plowmancraven.co.uk

London Office

Telephone 020 7490 7700 Fax 020 7490 7701



Plowman Craven