

Stadiums, Circuits and Athletes

Plowman Craven has been providing accurate measurement information within the sports environment for over 20 years.

Our highly skilled and experienced staff utilise the latest technology to provide sub-millimetre precision for aerodynamic analysis through to large stadium structures.

3D laser scanning has revolutionised data capture with its ability to collect over 500,000 three dimensional coordinates per second, creating an organised, highly accurate, digital representation of an object.

Real time access to this 'point cloud' data can provide critical measurements instantly, or post process provides the measurement platform to extract 2D drawings or produce 3D models.

Utilising 3D laser scanning technology presents a whole range of benefits:

- Rapid site data collection
- Completeness of data
- Reduces time and errors
- Ability to collect data in environments where access is difficult or remote

Marrying this technology with traditional surveying methods enables bespoke solutions for individual client requirements, whether for planning, development, refurbishment or even marketing.

This 3D approach taken by Plowman Craven is aligned with continual requests for 3D deliverables ranging from wire-frame, solid or surface modelling through to Building Information models (Revit©) which seamlessly integrate with existing design requirements and workflows.

Working closely with clients such as BDP, UK Sport, Nike and All England Tennis Club, Plowman Craven has been able to provide bespoke measurable solutions to this unique sector.

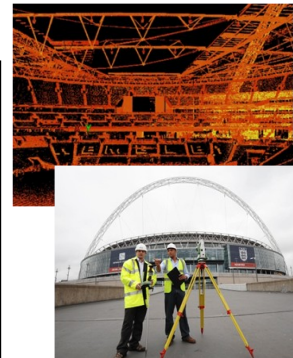
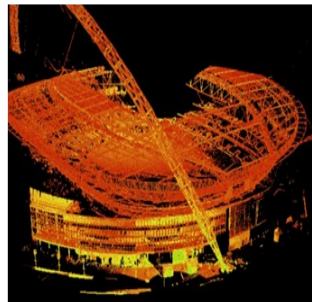
About Plowman Craven

Plowman Craven is an innovative surveying company and a trusted name which offers a broad range of measurement services across numerous and diverse markets. Operating worldwide, our highly skilled and motivated team make a difference by providing timely, collaborative and accurate solutions to meet your requirements.

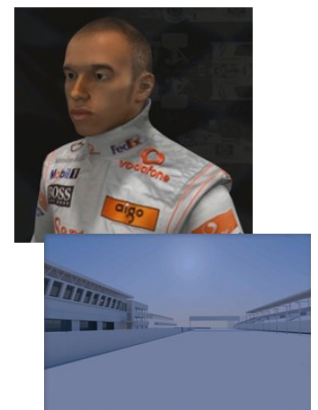


Laser Scanning and 3D Modelling

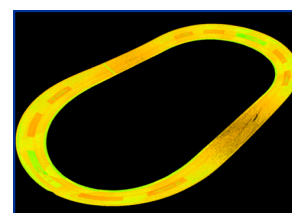
Wembley Stadium



Silverstone Circuit



Manchester Velodrome



Head Office
141 Lower Luton Road
Harpenden, Hertfordshire
AL5 5EQ

Tel: +44 (0)1582 765566
Fax: +44 (0)1582 765370

London Office
33A Clerkenwell Green
London
EC1R 0DU

Tel: +44 (0) 20 7490 7700
Fax: +44 (0) 20 7490 7701

Email: post@plowmancraven.co.uk