

Estate Data Management

Throughout the time that we have been in business, Plowman Craven has successfully offered a wide range of measured survey services. These have developed out of the combined effects of a highly skilled workforce and the support offered by technologically advanced equipment.

Added to these technical services are certain ancillary ones that relate to the management of data either for specific clients or for particular commercial property portfolios.

These owe much to a direct company initiative to develop close working partnerships with certain clients and these associations have often grown into more formal framework agreements and term commissions.

CAD Data Bureau Services

At the basic level, the type of assistance requested by our clients may be little more than standard CAD data bureau services of data retrieval and supply.

With over 45 years experience of surveying property of all types, from heritage to high street, throughout the UK and overseas, we have a sizeable archive of electronic data of survey work undertaken on behalf of clients.

Data is stored to enable efficient retrieval and supply on demand. The availability of any existing data gives property owners and landlords at those initial planning meetings some useful information from the outset, and may obviate the need for costly and time consuming re-measuring and reporting exercises. Our archive data also offers advantages if properties do require resurvey and data updating.

Plowman Craven has experience of working, recording and updating spatial data for several prominent London estates, each extending over numerous separate buildings and grounds.

This type of work is intrinsic to the framework agreements and term commissions that we have in place for prestigious estates. Existing floor plans and elevations measured years previously can be updated easily when alterations are undertaken during refurbishment programmes. These floor plans can be used as a basis for databases to show information like ICT Networks, Fire Compartments, and Emergency Lighting Networks.

Pressures to supply spatial information that is both current and complete, are ever increasing and the transfer of electronic data is a much more speedy and immediate process than in the past.

For work associated with datasets of a more sensitive nature, we are able to offer on-site data capture, processing and CAD support so that data is held securely and only on client networks.

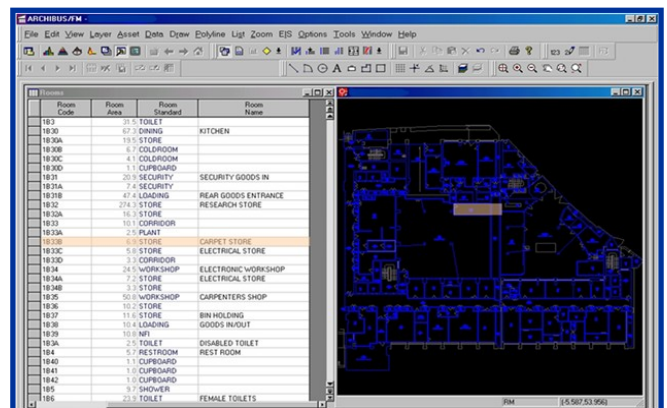


Tailored Estate Data Management Solutions

Some of our clients, (notably the Parliamentary Estates Directorate), have found that expanding upon the basic digital survey drawings by adding relational database material containing detailed estate information helps to improve efficiencies and reduce costs.

We have been using the CAFM software, Archibus, for over ten years, in conjunction with a number of our clients. This is facilities management software that provides a means of linking database information to 2D building plans.

Both drawings and database entries are updated on a regular basis. Recent developments enable Archibus linking to 3D datasets such as that produced in Revit, a building information modelling package.



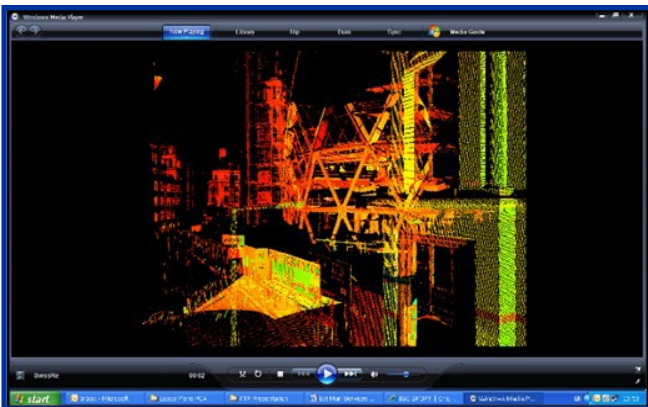
Terrestrial Laser Scanning

Laser scanning creates an organised, highly accurate, digital representation of a scene both quickly and efficiently.

Once this raw data is processed, it can be used in a variety of applications such as architectural design, measured building surveying, heritage preservation, virtual reality scene acquisition and 3D modelling.

This developing technology brings many benefits to our estate clients:

- Rapid site data collection within secure and restricted sites.
- Non-contact measurement reduces risk and safety constraints
- Collaboration and virtual site visits using visualisation software like TruView™
- Complete digital data set of the site in one visit.
- Reduced cost, by virtually eliminating the need for return visits to site if client requirements change.
- Permanent 'point-in-time' archive for heritage recording and reinstatement.



Our clients

Plowman Craven has experience of working, recording and updating spatial data for several prominent London estates, each extending over numerous separate buildings and grounds.

- Parliamentary Estates Directorate
- The Crown Estate

Close range scanning

Plowman Craven is one of the traditional geometrics survey companies that has embraced terrestrial laser scanning as a swift and total means of capturing spatial data.

Our experience with this modern technology has been extended into the field of close range scanning, suitable for capturing and recording surfaces of artefacts and people so as to create geometrically accurate models.

This is proving to be useful means of recording archaeological relics and works of art.



About Plowman Craven

Plowman Craven is an innovative Geomatics company, a trusted name which offers a broad range of measurement services across numerous and diverse markets. Operating worldwide, our highly skilled and motivated team make a difference by providing timely, collaborative and accurate solutions to meet your requirements.

Head Office

141 Lower Luton Road
Harpenden, Hertfordshire
AL5 5EQ
Tel: +44 (0)1582 765566
Fax: +44 (0)1582 765370

London Office

33A Clerkenwell Green
London
EC1R 0DU
Tel: +44 (0) 20 7490 7700
Fax: +44 (0) 20 7490 7701

Email: post@plowmancraven.co.uk

