

SURVEY OPERATION



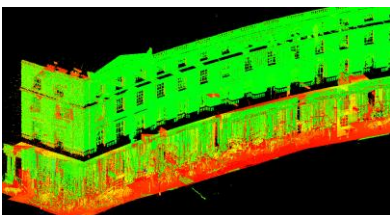
Plowman Craven were commissioned by Great Portland Estates to carry out a full measured survey of Park Crescent, the elegant stuccoed properties designed by the architect John Nash, on the edge of Regents Park.

To assist design and feasibility studies the experienced survey team had a tight deadline to provide a variety of deliverables – detailed floor plans, elevations, sections and net internal area reports.

The use of 3D laser scanning techniques and reflectorless total stations were key in enabling the accurate data capture of the ornate and semicircular nature of the buildings.

The 3D point clouds generated by the laser scanner enabled complete data collection and a flexibility of presentation, reducing the need to continually return to site thus restricting tenant disruption.

All data was delivered in a variety of digital formats to suit the clients requirements.



PROJECT

Park Crescent, London

CLIENT

Great Portland Estates

SERVICE

**Measured Building Surveys
Area Measurement
Laser Scanning**

141 Lower Luton Road, Harpenden
Hertfordshire AL 5 5EQ England
Telephone +44 (0)1582 765566
Fax +44 (0)1582 765370
email post@plowmancraven.co.uk
London Office Telephone + 44 (0)20 7490 7700

plowmancraven.co.uk

